

# Stare Masters

The windows to our souls receive plenty of play this season.



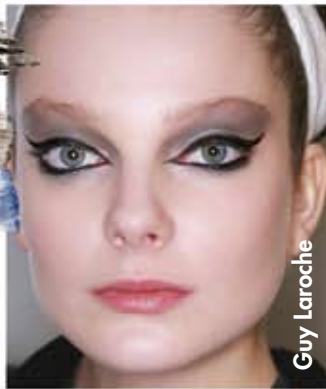
**Your Name Professional Brands**  
**SuperWear Creme Shadow** in Incognito  
**FACE atelier Transforming Gel**  
**gloMinerals gloReflection Cream Eye**  
**Shadow** in Gilded Bronze

## IT'S A GLOSS-UP

Eyelids go from vampy to sugar-coated when doused in slick gloss. Try a stay-put cream shadow for locked-in luster or transform loose or pressed powder into liquid with a gel.



**Pencil Me In Cosmetics Eye Accent**  
**Pencil** in Onyx  
**Styli-Style Nano Liner 24** in  
 Carbon Black  
**Sormé Cosmetics Jet Liner** in Sapphire



## LOOK LIKE AN EGYPTIAN

Cleopatra's kohl-rimmed eyes signal a sensual trend. Thick, precision-applied liner on lash lines provides graphic interest and catlike beauty.



**Bodyography Duo Expressions** in  
 Breathless  
**Stript Cosmetics Crushed Mineral**  
**Shadow** in Raven  
**Mineral Mine Crushed Eyeshadow**  
 in Pewter  
**Your Name Professional Brands**  
**Dimensional Shadow** in Goldspun

## UP STARES

Taking pigment to the brow lends an extreme '80s edge when done in darker hues, or a soft, wide-awake look when painted in sparkling brown.