

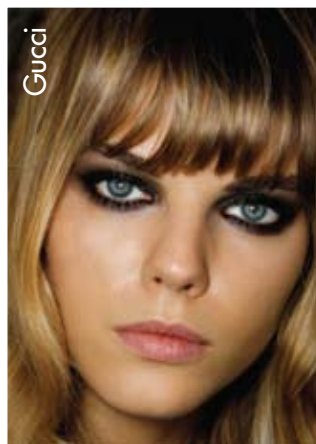
# Tough Luxe

Aggressive chic is the name of the game this season, with kohl-coated eyes pushing women toward the beauty edge. "This is all about strength, color and attitude," says Sothys sales executive Victoria Austin. To translate "tough chic" for the streets, Colorlab Private Label trainer Kim Spies suggests ditching ebony in favor of such smoldering hues as grays, plums, jades and sapphires.

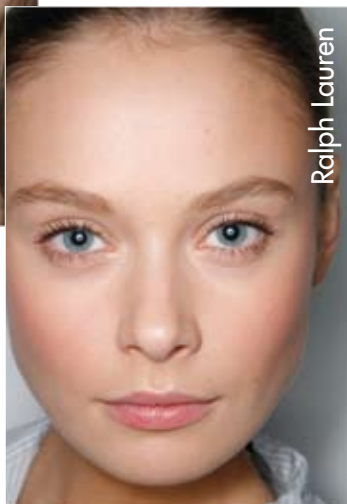
If your clients stick with black, Austin recommends "scaling back and blending well. If your clients don't want to look harsh, make sure they invest in blending brushes...and use them." Start off with a less-is-more esthetic: "Go easy on the darker shadow at first and then build your intensity," Youngblood Cosmetics celebrity makeup artist Philip Luque advises. To add a little bit of pop to this blackout trend as mega-makeup artist Pat McGrath did at Lanvin, Ranger recommends highlighting the look with a dab of silver. "This can brighten the eyes, lighten or soften the darkness, or even be used to focus attention on a particular area of the eye," she says.



- 1 **Bare Escentuals** Smoky Sequins bareMinerals Liner Shadow
- 2 **Being TRUE** Obsidian Eye Definer
- 3 **Colorlab Private Label** A Little Magic Mineral Eyeshadow
- 4 **Jane Iredale** Sizzle from Smoke Gets in Your Eyes Shadow Kit\*
- 5 **Youngblood** Sapphire Pressed Individual Eyeshadow



- 6 **Pencil Me In** Jet Sparks Eye Accent Pencil
- 7 **Sormé Cosmetics** Charcoal Smearproof Eyeliner



# Soft Focus

This season, the minimalist face emphasizes flawless skin—or at least the illusion of it. The newest lightweight products and application techniques work to mask any imperfections while allowing skin to breathe. To prep your client's visage, Robison points to a skin brightener as a logical first step, "preferably one that also acts as a light moisturizer, and apply it with a good blending brush so that it penetrates the skin." For the finish, keep the focus on texture; "matte" is the word, and Ranger draws

the parallel between fall's richer, more luxurious fabrics and how the skin should look: "soft and beautiful, like velvet." Elke Von Freudenberg for Brushes by Karen suggests lightly dusting skin with loose powder to offset any shine. "The new matte face isn't about piling on pressed powder," she divulges, adding, "skin should show through the product." To round out this picture of perfection, Von Freudenberg suggests imagining "an English Rose. Soft, dusty pinks for blush or lips marry well with matte skin. Also, a stronger, groomed brow keeps the look from going too soft."



- 1 **Sormé Cosmetics** Believable Finish Wet/Dry Foundation
- 2 **Sothys** Oxyliance Foundation
- 3 **Jane Iredale** Brush-Me Matte Loose Finish Powder
- 4 **Gerda Spillmann Swiss Cosmetics** Bio-Fond Cream Make-Up

\* Complete kit not shown.